



**One-on-one Instruction  
in Woodworking & Metalworking  
with David Orth**

*Orth Sculpture & Furniture*  
5181 E. Wyman Rd  
Fayetteville, Arkansas 72701  
708-288-5199  
[davidorth@OrthSculpture.com](mailto:davidorth@OrthSculpture.com)  
[www.OrthSculpture.com](http://www.OrthSculpture.com)

## Welcome

*Wood and metalworking are difficult, intimidating, and require some dedication. And that's why they are fun, satisfying, and full of wisdom. The ability to make useful and beautiful things from raw materials is one of the most satisfying and hopeful things you could do.*

*Books are helpful, but rarely reveal the key elements that make it work. Most woodworkers posting on YouTube are beginners themselves - passing on their lack of insight & weird passion for epoxy pours (don't get me started).*

*Sometimes you need your questions answered as they come up. You need to see & feel how it really works. You need that proverbial kick-in-the-butt you can't very well administer to yourself.*

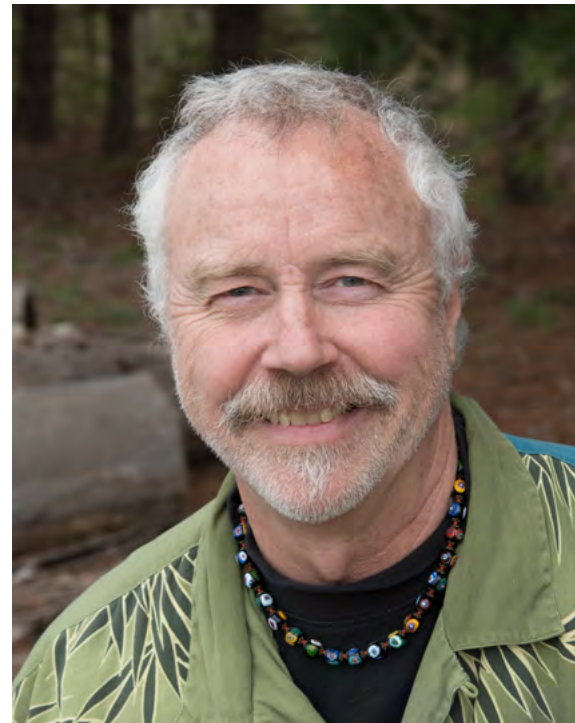
*Almost from the very beginning of my professional career, I agreed to teach others whatever I had figured out to-date. It's a natural cycle. My grandfather & my mother taught me. Maybe someday you'll teach others what you know.*

*Enjoy this catalog of study ideas, what to expect, and requirements. Or just pick up the phone/drop me an email.*

*- David Orth*

## Contents

<i>What People Say</i>	<i>.....</i>	<i>3</i>
<i>How it Works</i>	<i>.....</i>	<i>4</i>
<i>Fees &amp; Requirements</i>	<i>.....</i>	<i>5</i>
<i>Skills &amp; Projects</i>	<i>.....</i>	<i>6</i>
<i>More Details .</i>	<i>.....</i>	<i>15</i>
<i>Contact &amp; Location</i>	<i>.....</i>	<i>17</i>



## What People Say

### *Liz Williams, Baton Rouge - 2016 weeklong*

*"I can't express how much I enjoyed working with David! I learned sooo much! He was flexible with me as I dragged him around with question after question. His knowledge of metalworking and woodworking is deep and varied. I wish I could have taken a month long course – this was worth every penny. Back to my own shop now - practicing my new skills."*

### *Members of the Minnesota Woodworker's Guild - 2016 Fall Seminar*

*"David was very well organized and prepared. Very good explanation and demonstration."*

*"Inspiring! Enjoyed it very much. Time well spent. It gave me lots of ideas to try in my own work."*

*"David introduced me to techniques and ideas that were completely new to me."*

*"Excellent. I liked the combination of philosophy, design, and technique."*

### *Michelle C., Illinois - Instruction for Teen 2013 to 2016*

*"My son studied with David three years and is now well on his way to a welding career. David Orth is a treasure. Our creative son needed a way to work with his hands. So finding a reputable, knowledgeable and friendly wood/metal teacher was high on our list of priorities. Wise, funny, persistent when needed - David is a true gem in passing his knowledge to the next generation. Whatever my son decides to do, the skills David taught and shared with him will last a lifetime."*

## How it Works

*David works with novices, advanced amateurs, and working professionals - ages 10 and up. Instruction is one-on-one (or one-on-two if they sign up together to work on the same skills). This year-round opportunity will*

- *begin at your level & take you to the next*
- *narrow in on your own interests*
- *fit your own schedule*

*Pick a skill you'd like to learn - or get into a project that will teach you skills as you go. If you're not sure, David will help you identify your next step. To stir your thinking, this catalog lays out over 50 wide-ranging subjects.*

*Much like an old-world apprenticeship, you can expect a high level of challenge. Unlike a medieval apprenticeship, David is patient, a little bit funny, and won't make you sweep the floor for seven years. He knows when to keep it simple - and when to let you in on some of the mind-bending possibilities.*

*The approach here combines both traditional & modern tools for the small shop. Old-timer tricks and new approaches.*

*Instruction takes place in David's shop, in the hills just outside Fayetteville, Arkansas. Whether using an antique cabinet scraper or a high-tech TIG welder, Orth*

*favors versatile tools that do great work and take up the least amount of space - a small shop philosophy ideal for beginners & professionals alike.*

*Fees & requirements next in the catalog. Getting started is easy. Contact David to*

- *answer your questions*
- *schedule a session*
- *discuss a topic or project*

*You are welcome to schedule a no-obligation, introductory appointment to see the shop and meet David.*

[davidorth@OrthSculpture.com](mailto:davidorth@OrthSculpture.com)

708-288-5199

5181 E. Wyman Rd  
Fayetteville, AR 72701



## Fees & Requirements

### Fees:

- \$75 per hour
- \$450 per day
- **Weeklong intensive: \$1950**  
*Seven hours of instruction a day. Any five days in a week. One hour for lunch and breaks. Imagine yourself at the end of the week at a completely new level of skill.*
- *Rate for two students studying the same skills: add 40%*
  
- *Supply and preparation fees apply based on your chosen project.*
- *Advance payment for days & weeklongs required at scheduling time.*
- [Further details](#) *about rescheduling, what to bring, etc.*

### Requirements:

- *Students must certify that they have experience with cutting tools, power tools, and an instinct for personal safety. All students must sign a comprehensive liability release and provide proof of health insurance.*
- *A guardian must sign for underage students. Power tool limitations may be discussed and agreed on.*
  
- **Tools & Safety Equipment to Bring**  
*Most tools will be provided. Exceptions are specialized hand tools that require honing, tuning, & soon become an extension of your own hands - handplanes, scrapers, spokeshaves, and chisels. Also, bring your own safety equipment - eye & ear protection especially. David will consult with each student about what tools or supplies they will need to bring for their chosen area of study.*

*Here is a short [guide to personal woodworking hand tools](#) - not all required - just for your information as you begin to outfit your own workbench.*

## Skills & Projects

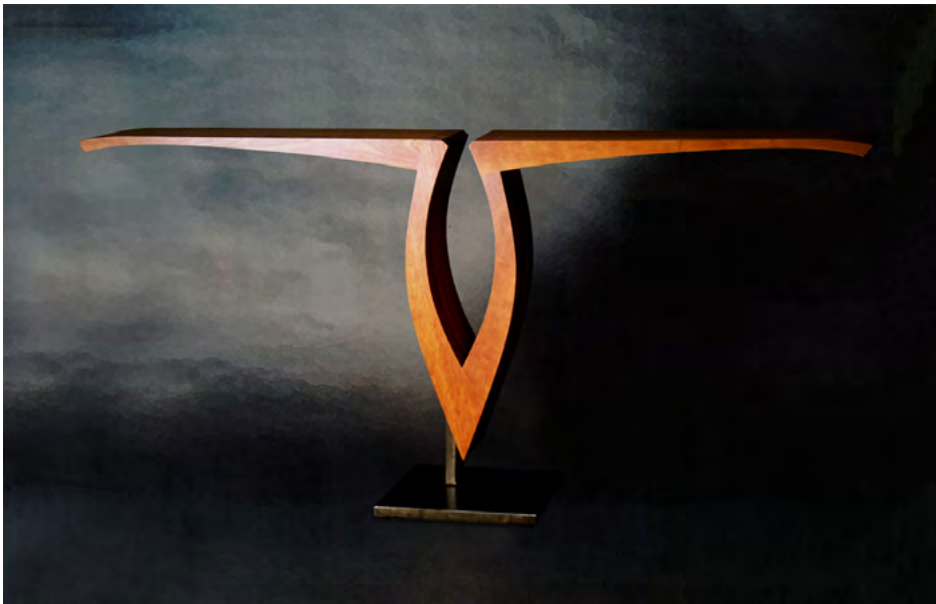
*If you're not sure what to study or how to proceed, the following pages list common clusters of skills.*



- *Chisel Sharpening*
- *Handplanes:*  
*preparation, tuning, and skills*
- *Handplaning and Scraping a Table Top*
- *Spokeshave: preparation and use*
- *Hand Scrapers and Cabinet Scrapers*
- *Five Handtools in a Day: planes, spokeshave, scrapers, chisels, and sharpening stones*
- *Make your own Wooden Handplane*

## Cutting & Joining

- *Cutting Curves 1: bandsaw & hand tools*
- *Cutting Curves 2: router & templates*
- *Tapering Wood on the Tablesaw, Planer, etc*
- *Edge to Edge Joinery: by hand or machine*
- *Avoiding Sanders & Dust:  
smoothing plane & scraper*
- *Mortise and Tenon Joinery*
- *Handcut Dovetails*
- *Small Shop Production Joinery:  
dowel jigs, box joints, & biscuit joiners*





## Advanced Techniques

- *Fundamentals of Woodturning*
- *Fundamentals of Wood Carving*
- *Bent, tapered lamination*
- *Drawers*
- *Hammer veneering - old school without clamps or presses*
- *Veneer Inlay*
- *Detailing your work with carving, applied wood elements, and other materials*
- *Repairing mistakes. A craftsman makes mistakes, but knows how to fix them.*



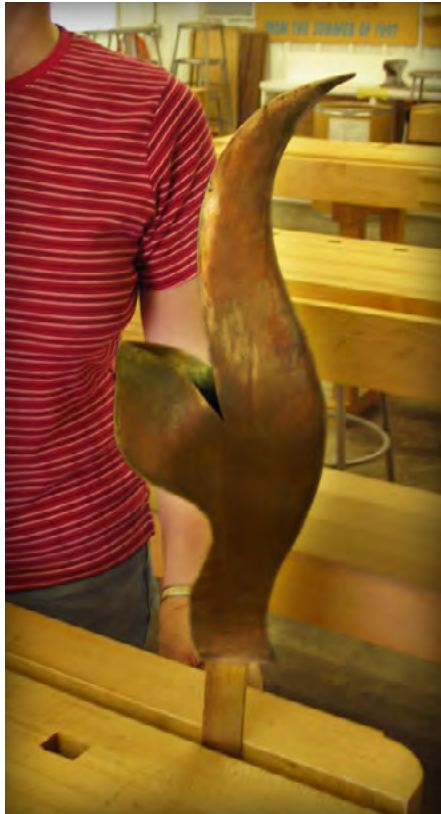


# Curvature in Wood & Metal

- *Build a steel or bronze Table*
- *Build a metal Sculpture*
- *Build a kayak*
- *Design - Developing the Big Idea & Refining the Details*



Jay Mamon



Bill Wheeler

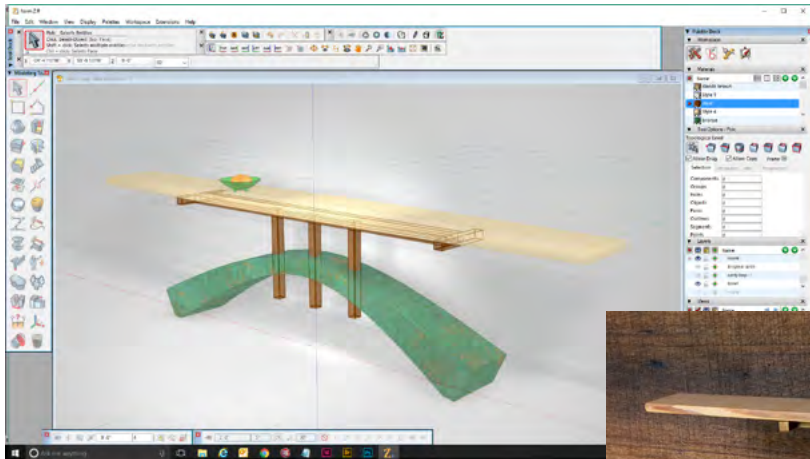
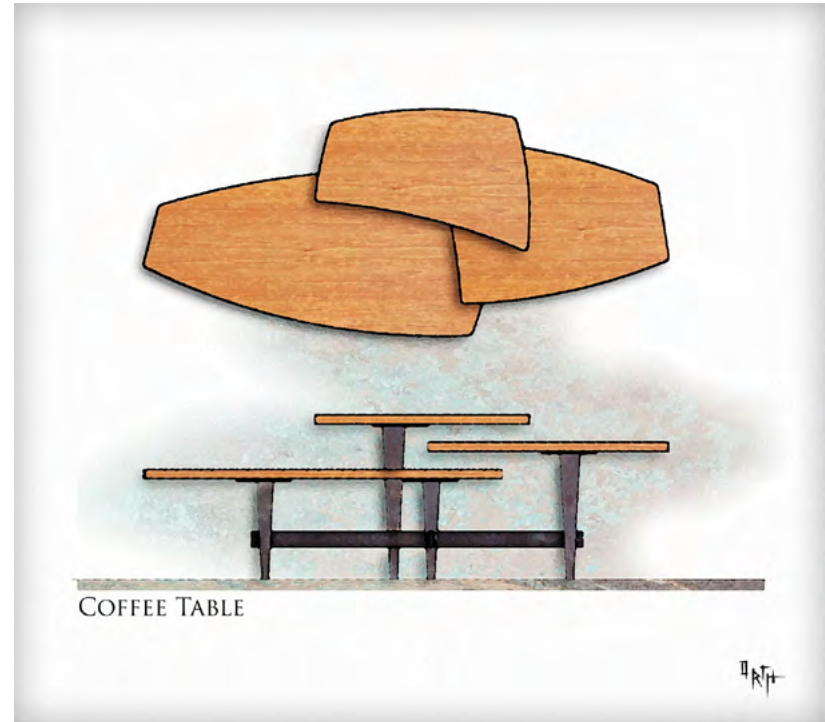
## Metalworking: Cutting, Forming, & Welding



- *MIG welding steel or bronze*
- *TIG welding steel or bronze*
- *Plasma cutting metal*
- *Basic metal handforming*
- *Using wood and metal together*
- *Sheetmetal work*
- *Rivets & rivetnuts*

## Design & Illustration

- Ink & Pencil Illustration
- Digital Illustration
- 2D CAD software
- 3D modeling software
- Physical modeling to scale - wood, clay, foam
- Enlarging drawings: manually or digitally



## Restoration & Finishing

- *Furniture repair & re-finishing: bring a chair, or something, that needs fixing up.*
- *Rush a chair seat*
- *Danish-style Oil Finishes*
- *Fine finishes for Wood or Metal*
- *Rustic & Weathered Finishes for Wood or Metal*



## Photography & Marketing for the Small Shop

- *Photograph your Work Professionally*
- *Image Editing*
- *Portfolio Design*
- *Small Shop Business Practices*
  
- *Make a Victorian Style Stereoscope*
- *Learn the art of stereo photography*



## Wood Fundamentals



- *Wood Science:  
How Wood Works & Why*
- *Wood selection  
What to watch out for at the lumberyard  
and how to speak “LumberJack”*
- *Truing up roughsawn lumber with power:  
jointers and planers*
- *Truing up roughsawn lumber by hand:  
jack plane & marking tools*
- *Curing your own wood*



*I look forward to working together to develop your skills, work on projects, or to discussing the business and philosophy of woodworking, metalworking, and design. You and your questions are welcome here. We will start from where you are and walk as far as possible in the direction you want to go. Please call me in advance with any concerns or questions.*

*- David Orth*

## More Details

### Checklist and FAQs

- *Contact David early on to discuss your project wishes or skill development plans, and to arrange a schedule. Consult the list of skill and project ideas, but suggest anything you'd like to learn. David will be glad to help you develop a plan.*
- *Tools are generally provided, but consult David about any specialty tools that you'll need to bring.*
- *Workdays are up to 7 hours in length, plus an hour for lunch. Generally we begin at 9, break for lunch at noon, and finish up at 5. Adjustments can be made.*
- *All consultations by phone or email, any specific advance preparations by David, and any specific follow up efforts by David, will count as instruction time & billed accordingly.*
- *David will be at your side whenever you need instruction, guidance, a helping hand, etc. However, on the whole, the Student is the Builder*

*and can expect to work alone on their project from time to time as appropriate.*

- *Some materials and supplies may be available for purchase from the shop, but generally you should acquire your project materials in advance, or plan with David to visit local lumberyards and suppliers together. Some operations (such as welding) may incur reasonable fees to recover the cost of supplies.*
- *Sign liability release in front of a witness - I can't be your witness. Have them sign it, too. Include a photocopy of your health insurance card. No exceptions. You will be affirming that you are a safe operator of tools & handler of materials, that you take responsibility for your own health, that you have medical insurance, and a few other things.*
- *Guardians for underage students contact me for details.*
- *Scheduling: All scheduling is subject to mutual agreement. The earlier you can schedule, the more likely your desired schedule will work out.*
- *Payment is due at the end of hourly sessions.*
- *Payment for full days & over is due at scheduling time.*
- *Checks accepted. Advance payment by credit card available through PayPal.*
- *Sessions under 3 hours can be rescheduled once without penalty if done 24 hours in advance.*
- *Sessions over 3 hours can be rescheduled 24 hours in advance with a 10% rescheduling fee.*
- *Refunds only if cancellations are initiated by David Orth.*

*. . . continued*



## Food

- *Everyone brings or purchases their lunch. There are several local restaurants and fast food joints we frequent.*

## Dress:

- *No sandals or open toes. Wear work clothes that you don't mind getting dirty. Some work aprons are available here.*
- *Dress according to the season, but even during summer you should always have a pair of long-pants and a long-sleeved shirt for work that requires extra skin protection.*

## Bring your own Protective Gear:

- *Eye protection: safety glasses or goggles.*
- *Ear protection (I like the headphone type, but I also keep ear buds available for occasions when the larger headphone type cannot be used).*
- *Work gloves – Light leather gloves are preferred instead of the heavy-duty construction type. (Safety note: Gloves are removed when using most power machinery.)*
- *Nuisance dust masks that fit you properly.*
- *Specialized safety equipment may be required for your chosen field of study - consult Davd.*



## Contact & Location

708-288-5199 (voice or text)

[davidorth@orthsculpture.com](mailto:davidorth@orthsculpture.com)

David Orth  
Orth Sculpture & Furniture  
5181 E. Wyman Rd  
Fayetteville, AR 72701

