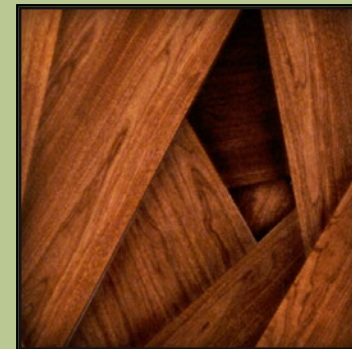


Portfolio #2

**Furniture in Wood
& Wood/Metal Mix
by David Orth**



David Orth
Orth Sculpture & Furniture
5181 E. Wyman Road
Fayetteville, Arkansas 72701
708-288-5199 voice / text
DavidOrth@OrthSculpture.com
www.OrthSculpture.com

Testimonials & Reviews

“... an articulate, loving sense of craftsmanship drawn from the past ... sustained conceptually by...humor and personal vision ... highly sensual ... finely tuned ... consistent ... truly ‘art furniture.’”

- The New Art Examiner

“Orth’s art is amazing...overwhelming...the primal versus the ethereal. Rock and roll...the blues...arias.”

- James A. Mangum, author of the Dos Cruces Trilogy

“fabulous ... mess-with-your-mind appeal”

- Sandy Hill, Studio Hill Design, Albuquerque

“My clients are very impressed with the originality, timelessness and quality of David’s art. His work is uniquely his own style and works so well in any environment. I am easily able to communicate with him as to my clients’ needs and he never fails to deliver a design that is beautiful, appropriate, and on time.”

- Lois B. Gries ASID, Past President, ASID Illinois

“Professionalism is the operative word in working with David Orth. His follow through and timeliness are admirable. As an interior designer, I appreciate the artistic integrity with which David adapts his designs to specific sites.”

- Marilyn Davis, ASID - IIDA
Highland Park, IL

“... really occupies that space between ‘what is furniture?’ and ‘what is art?’ Really very, very beautiful work.”

- Victoria Lautman reporting for Chicago Public Radio

“Good work.”

- Walter A. Netsch, American architect

“Serious design.”

- Ruth Duckworth, American sculptor

“Holy Cow.”

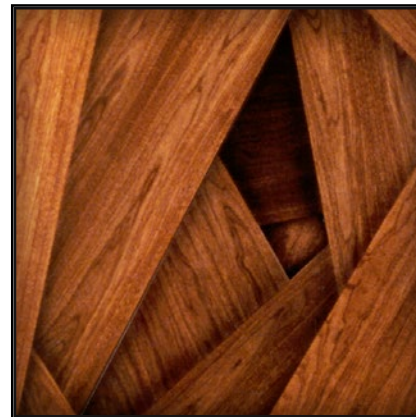
- Kerry Aufderheide, Blue Table Studio, Denver

Orth Sculpture & Furniture

portfolio #2 Furniture in Wood and Wood-Metal Mix

Longtime Chicago sculptor DAVID ORTH now designs and custom crafts sculpture, furniture, and other objects in his rural woodworking and metalworking studio in northwest Arkansas. His 30 years of critically acclaimed work is scattered across the country in public and private places. His ideas morph freely into functional and non-functional projects. The resulting work juxtaposes handcraft and industrial process, unfolding into a world of strange beauty and intellectual challenge.

Inquiry about stock or custom design is welcome.





Tall Cabinet - #7008
Material Shown: Cherry
Size Shown: 24W x 68H x 12D



Side Cabinet - #5909
Materials Shown: Bird's-Eye-Maple & Walnut
Size Shown: 76W x 36H x 20D

*First commissioned as a music cabinet
with several visible niches for family heirlooms.
Note random shape of doors and drawers.*



Coffee Table - #5910

Materials Shown:
Blued steel & bleached
oak.
46W x 15H x 30D

Heavy steel plate.
Folded & spiraled.
Oak beams.



Meteorite Table - #5912

Raw oxidized steel
Size Shown: 48Diameter x 15H

Coffee table incorporating heavy steel bowl.
Dining table version & other sizes available.



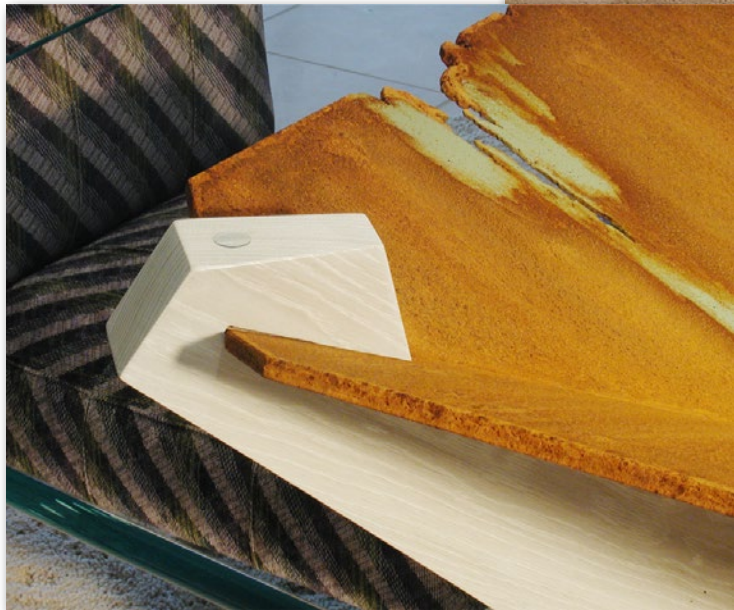
Riverside Coffee Table #7717
Materials top: Cherry & Steel shown
Materials bottom: Walnut & stainless steel
Size: various



Coffee Table - #7007
Materials Shown: Moabi & Cast Aluminum



Saturn Coffee Table - #5914
Materials Shown: Curly Maple, Walnut, & Steel
Size Shown: 48Diameter x 15H



Dining Table - #7313

Materials: Oxidized steel & bleached oak.

Size Shown: 60W x 30H x 60D

*Large steel bowl in the form of an inverted pyramid.
Suggestion of an archeological age.
Heavy, finely-tuned oak structure supports steel and 3/4" plate glass top. Custom sizes and finishes available.*

*"Not only is the universe stranger than we think,
it is stranger than we CAN think."*

- Werner Heisenberg



Wall Cabinet - #7314

Materials Shown: Blued steel & bleached oak.

Size Shown: 81W x 103H x 16D

A soaring, jazz-inspired cabinet composed of three clustered & interpenetrating forms. Raised finger pull details with gold leaf.





Curiosity Cabinet - #7308

Materials: Cherry with copper drawers
& brass pulls

Size Shown: 61W x 40H x 18D

A cabinet for the collector inspired by 19th Century paleontological displays and oddity collections. All trays are interchangeable and lined with crushed velvet. The top four trays are visibly displayed under beveled glass.





Occasional Tables - #5805 & #5924

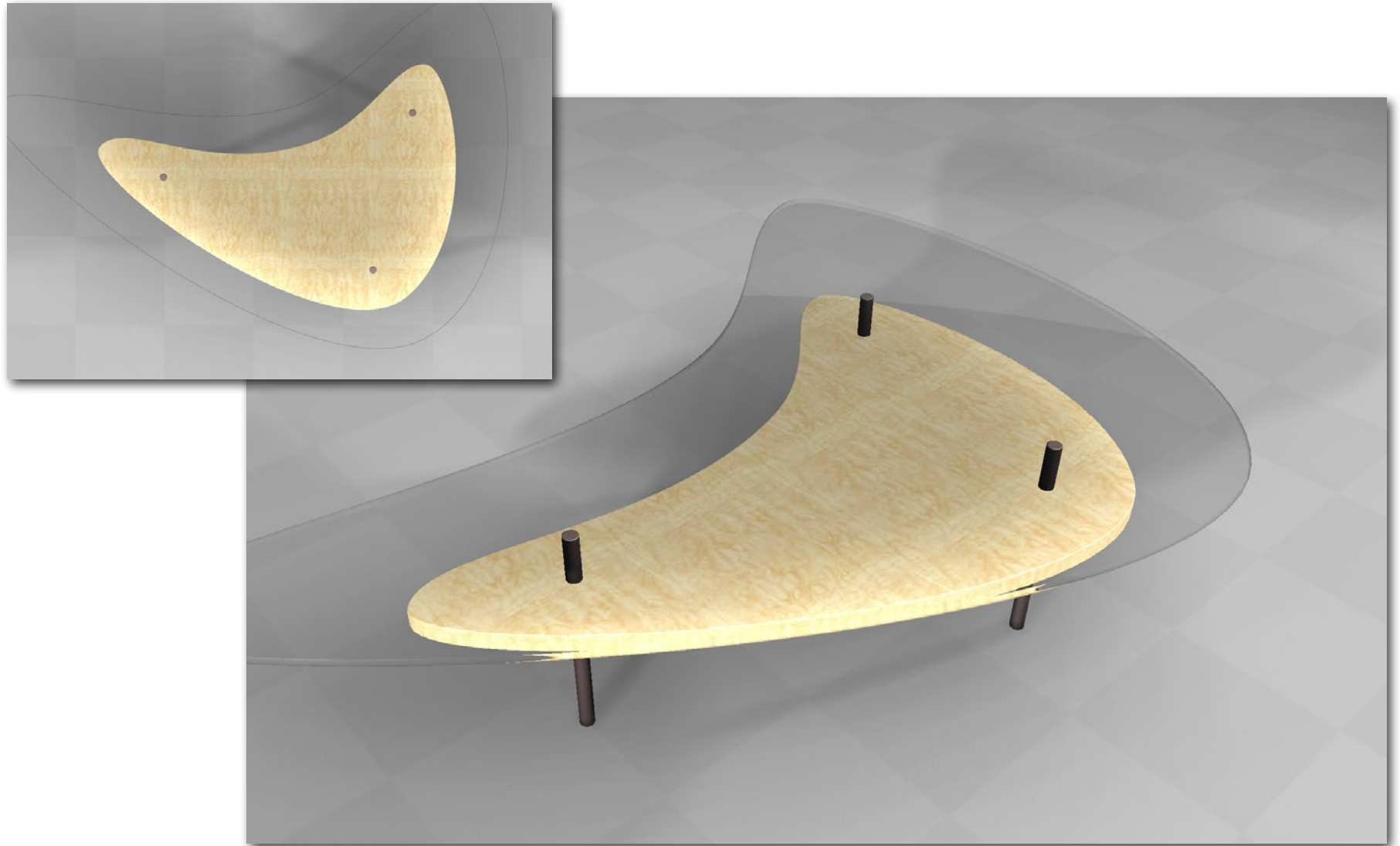
Materials Shown: Cherry, Australian Lacewood & Blued Steel

Size Shown: various

These related designs are respectively a coffee table (above 5805) and a corner table/lamp table (on the right 5924).

The continuous shape begins at the floor arcs up, sweeps generously around the top, and finally returns to the ground.





Boomerang Table # 7316

Mid-century free form tables make me happy.

They can be generous without impeding traffic patterns or overwhelming a room. Innovations here are the use of glass with a floating wood surface for a book or art object. The form is readily customized to fit any space. Shown here with quilted maple & steel.



Atlantis Chairs - #5809

Materials Shown: Cherry & Ribbed Upholstery

Size Shown: 18W x 38x 21.5D

This chair was designed to go with the Atlantis Tables. It is the end result of many earlier experiments and versions. Comfortable, strong, and flowing.



Sylvan Series Table - #5903
Materials Shown: Weathered Oak, Zinc, & Steel
Size Shown: 72W x 36H x 13D

Raw, slightly asymmetrical, smooth to the touch.



Arch Table - #5812
Dyed bird's-eye-maple with pink marble detail
Size Shown: 44W x 32H x 13D

Little Arch Table - #5905
Materials Shown: Moabi with marble detail
Size Shown: 24W x 32H x 11D



Einstein's Table - #5922
Materials Shown: Steel

Seamless coffee table design appears to be formed from one piece of steel plate - a warped, singularity.



Coffee Table - #5906
Materials Shown: Maple
Size Shown: 48W x 12H x 48D

*4" thick table top.
Hand-carved crack details.*

Sunyata Table - #5920
Materials Shown: Figured Maple & Steel
Size shown: 41W x 30H x 22D



Prairie Gothic Wall Cabinet - #6904
Blued Steel, Walnut, & Bronze (or Goldleaf)
Size: Various
Carved finger pull.





Cabinet - #7352

Materials Shown: Walnut & Brass

Random door and panel patterns spice up a classic. Note the beveled panels of aged brass.

Custom sizes, materials, and finishes available.

Shelves/Room Divider - #7703
Materials Shown: Walnut
Size Shown: 29.5W x 55H x 10D



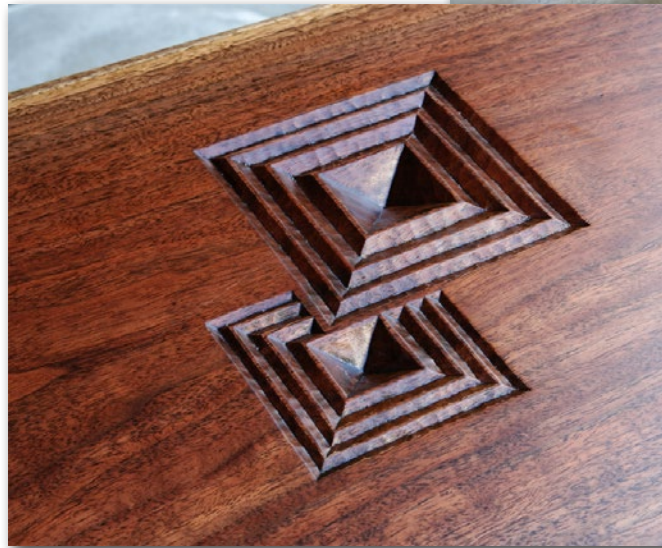
Pedestal/Room Divider - #5917
Materials Shown: Pomelle Sapele & Steel
Size: to order



An unusually large slab of walnut - primal and rare. Its sheer geometric expanse is softened with taut nautical curves.

A contrasting bronze base, reflects & supports the top while establishing its own commensurate force and point of view.

Random, handcarved details suggest abstracted raindrops, fingerprints, and other fractal patterns.



Clapp Table #7441
Materials: Bronze, Walnut, & Steel
Size: 140W x 33H x 18W



Atlantis Table (Wood Top) - #5908

Materials Shown: Cherry & Ebonized Mahogany
Interior by Gail Prauss



Atlantis Table (Glass Top) - #5937

Materials Shown: Oak & Black Lacquer
Size: Various

The glass top Atlantis Table sports intriguing structural balance and visual illusion. Glass top cantilevers out over the legs, supported solidly at the center of each arch.



The Atlantis Tables are distinguished by the deconstructed leg to table top connections giving a sense of floating. Works also as a side table.

Patinas



Bronzed Steel



Gun Metal Steel



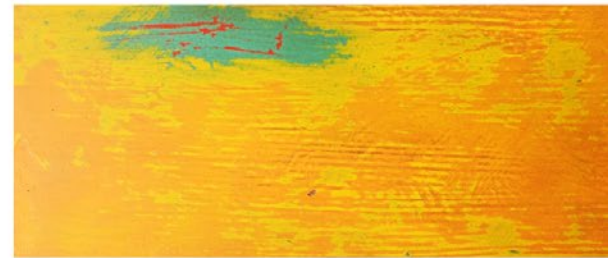
Oxide & Faux Verdigris



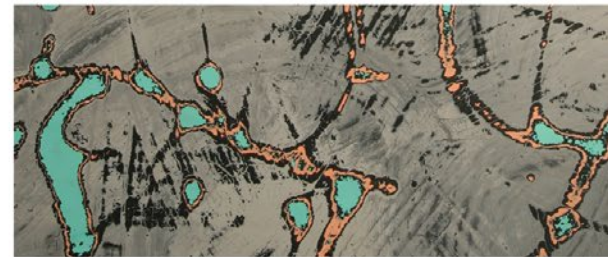
Feathered Steel

Steel Finish Ideas

Enamels



Sunburst



Planet



Hammered Finish



8101



8103



5916



5904



6903



7106



7203



7202



5933

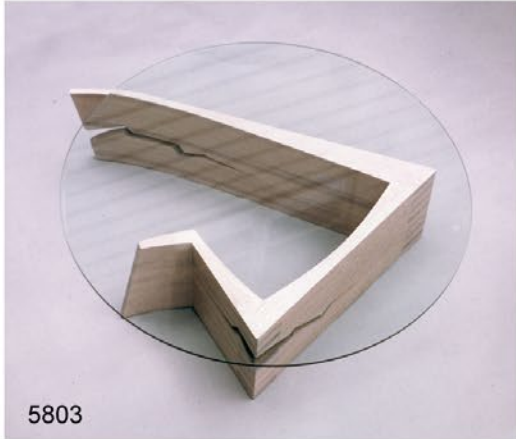


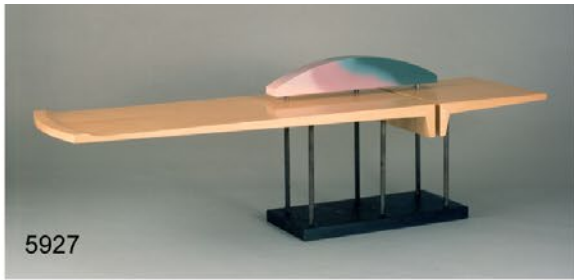
5902

Addendum #1

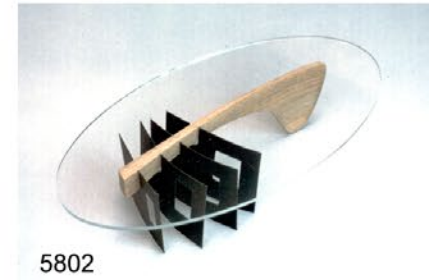
The following pages are overflow projects. Further info and better pictures available for the asking.

Addendum #2





Addendum #3



Addendum #4



5814



7329
& 7330



7105



5808



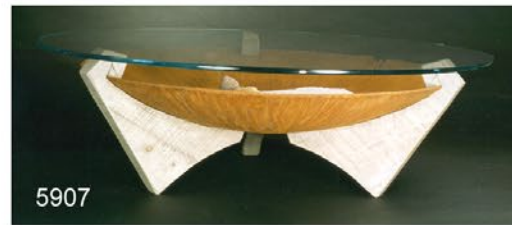
7327



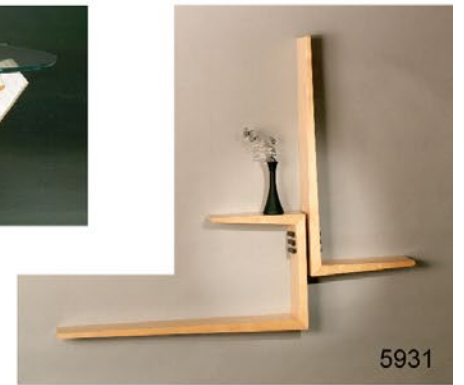
7312



5923



5907



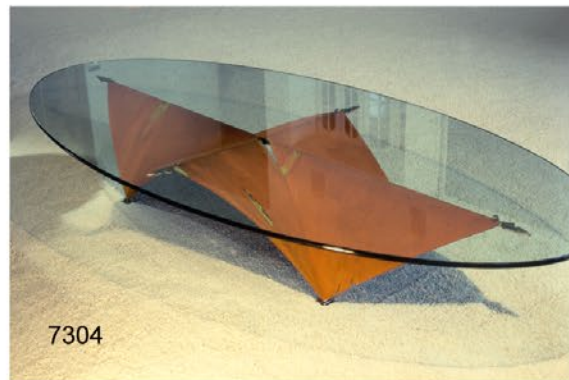
5931



7107

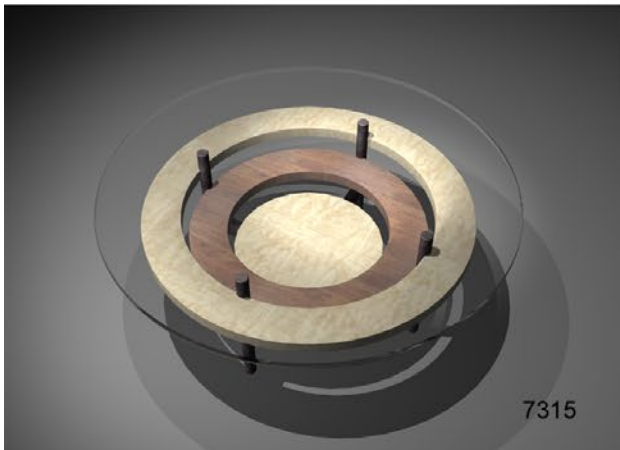
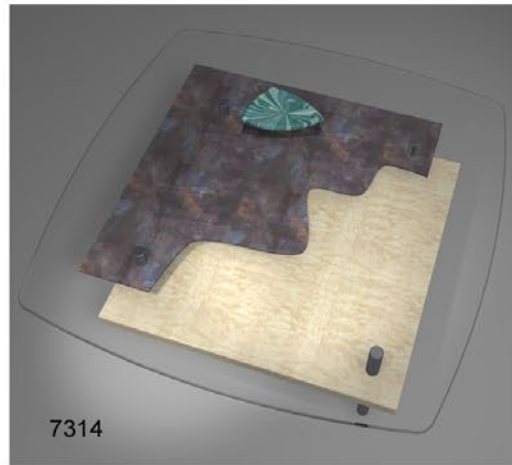


5935



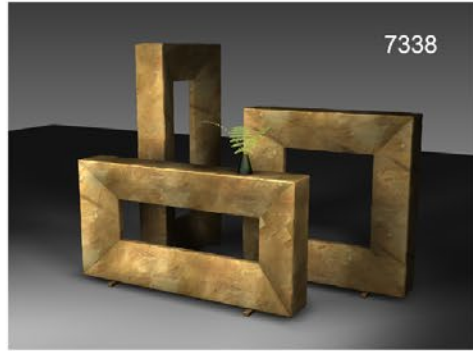
7304

Addendum #5

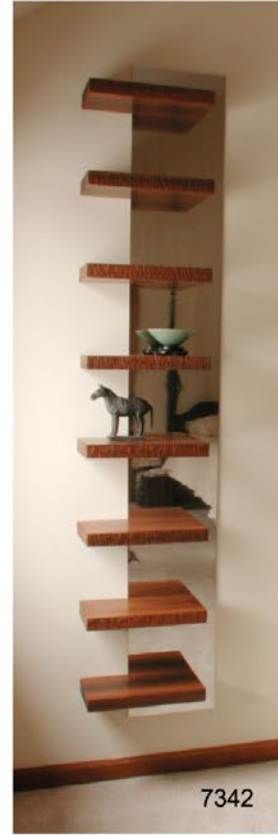




7319



7338



7342

Addendum #6



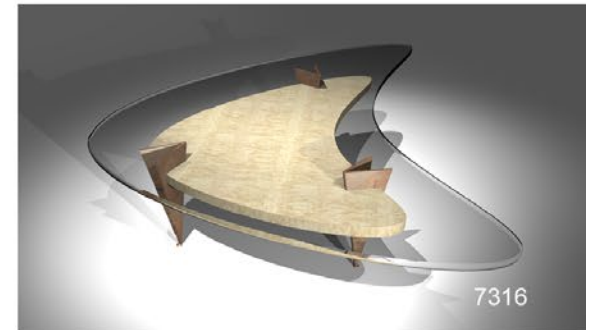
5811



7328



7332



7316



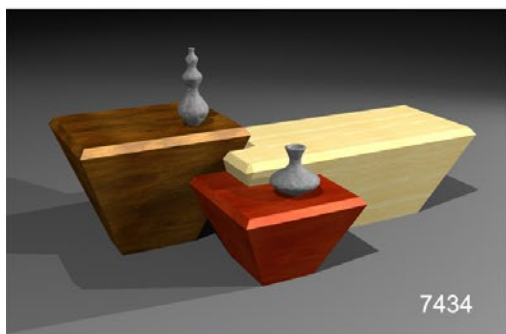
Addendum #7



7358



7432



7434



7443



[More at www.OrthSculpture.com](http://www.OrthSculpture.com)



photo by Lee Weitzman